

# THRU-HOLE (THM) & SURFACE MOUNT (SMT) COIN CELL HOLDERS

## DESIGN ADVANTAGES...

- Reliable spring tension assures low contact resistance
- Retains battery securely to withstand shock and vibration
- All conductive polystyrene carrier tape meets ANSI/EIA - 481 standard

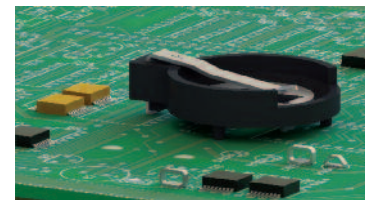
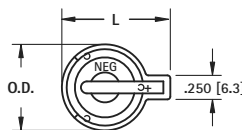
- Base material UL Rated 94V-0. Impervious to most industrial solvents
- Operating temperature range: -60°F to +293°F (-51°C to +145°C)

## IDEALLY SUITED FOR...

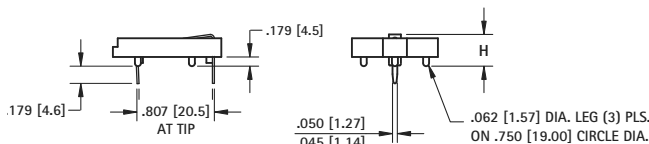
- Computer memory, power transfer and back-up systems
- Video and telecommunications power back-up
- Microprocessors and Microcomputer memory hold (desktop and laptop applications)

- Industrial and commercial security and alarm systems
- Communications power sources
- PC 104 applications

### 20mm THRU-HOLE MOUNT CON CELL HOLDER



- Advanced air-flow design enhances air circulation around battery
- Reliable spring tension assures low contact resistance
- Unique notched slots assure quick and easy battery insertion and replacement
- Retains battery securely to withstand shock and vibration



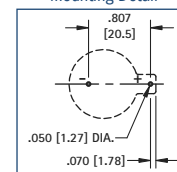
## MATERIAL:

Contacts: .020 (.50) Spring Steel, Tin-Nickel Plate

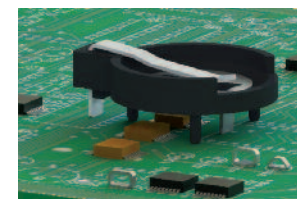
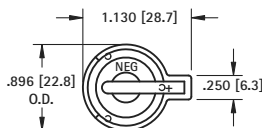
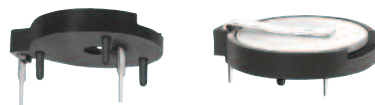
Base: PBT, UL Rated 94V-0

CAT. NO.	H	L	O.D.	NO. OF CELLS	BATTERY REFERENCE
103	.335 (8.5)	1.130 (28.7)	.896 (22.8)	(1) cell (any 20mm) (2) 2012, (2) 2016	BR2012, CR2012, CR2016, CL2016, DL2020, CL2025, BR2025, CR2032, CL2032
106	.335 (8.5)	1.219 (31.0)	1.093 (27.8)	(1) cell (any 20mm) (2) 2012, (2) 2016	BR2012, CR2012, CR2016, CL2016, DL2020, CL2025, BR2025, CR2032, CL2032
1026	.452 (11.5)	1.219 (31.0)	1.093 (27.8)	(2) 2020, (2) 2025, (2) 2032	DL2020, CR2020, CL2025, BR2025, CR2032, CL2032

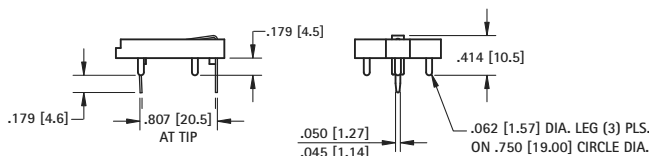
## Mounting Detail



### 20mm RAISED MOUNT COIN CELL HOLDER



- Designed to maximize PC Board Capacity
- Unique raised mounting design allows components to be placed underneath the holder
- Ideal when board space is more important than board height; such as PC 104 applications



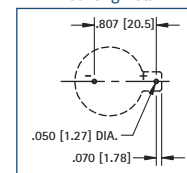
## MATERIAL:

Contacts: .020 (.50) Spring Steel, Tin-Nickel Plate

Base: PBT, UL Rated 94V-0

CAT. NO.	BATTERY REFERENCE	NO. OF CELLS
101	BR2012, CR2016, CL2020, CR2025, CR2032	(1) cell (any 20mm) (2) 2012, (2) 2016

## Mounting Detail

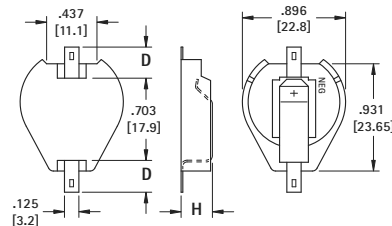


### 20mm SURFACE MOUNT COIN CELL HOLDER

#### AVAILABLE ON TAPE AND REEL



- Polarity clearly marked (+)
- Compatible with vacuum and mechanical pick & place assembly systems
- SMT solder tail with "Flow-Hole" design for increased joint strength
- Viewable solder tails assures reliable joint inspection
- Safe for all soldering & reflow operations



## MATERIAL:

Contacts: .015 (.38) Steel

Base: High Temperature, Nylon 46, UL Rated 94V-0

Tin-Nickel Plate		Gold Plate (Flash)		D PAD SIZE	H HIEGHT	NO. OF CELLS	BATTERY REFERENCE
CAT. NO. BULK	ON TAPE & REEL	CAT. NO. BULK	ON TAPE & REEL				
1061	1061TR	1081	1081TR	.156 (4.0)	290 (7.4)	(1) Cell (any 20mm) (2) 2012, (2) 2016	CR2012, CL2016, BR2020, DL2032 CR2032
1063	1063TR	1093	1093TR	.278 (7.1)			
1062	1062TR	1082	1082TR	.156 (4.0)	.406 (10.3)	(2) 2020, (2) 2025, (2) 2032	
1064	1064TR	1094	1094TR	.278 (7.1)		(3) 2012, (3) 2016	

Tape & Reel Spec's: 44mm wide; 32mm pitch; 13 inch reel (200 pieces per reel)

## Pad Layout

