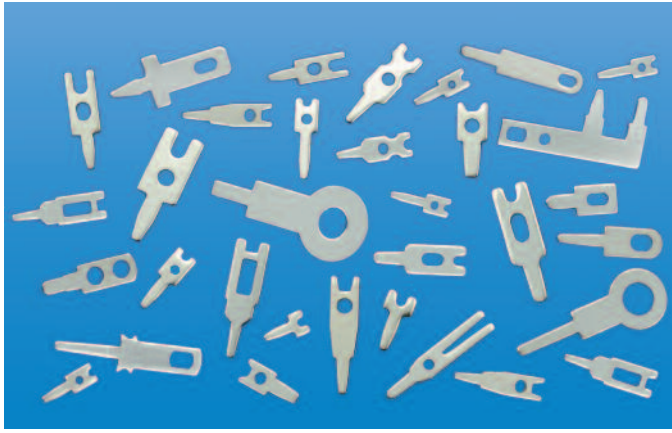
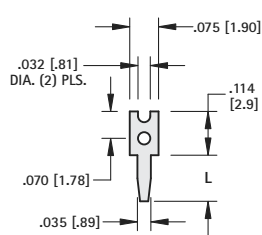


THM TEST POINTS - SLOTTED & LOOP TYPES



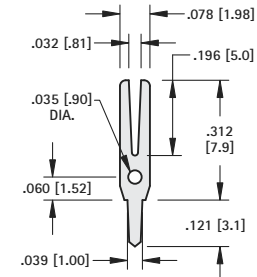
- Low profile, space saving designs for dense packaging
- Wide variety of configurations to suit most applications
- Safe, practical, economical replacement for wire-wrap posts
- Easy mount design, ideal for wave soldering
- Re-fit PC boards without need for re-design
- Provides easy access for production testing and field service troubleshooting
- Positive grip when using J hooks, EZ hooks, grabbers, clips, tips and probes
- Custom test point terminals can be manufactured to your specifications
- Other platings and materials available upon request

MATERIAL: Brass, Tin Plate



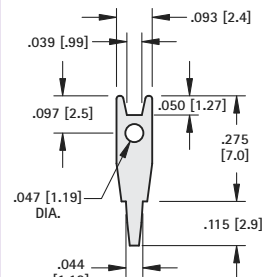
MATERIAL: .025 (.64) Brass

CAT. NO.	L
1030	.120 (3.0)
1031	.156 (4.0)



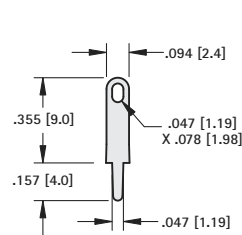
MATERIAL: .016 (.41) Brass

CAT. NO. 1037



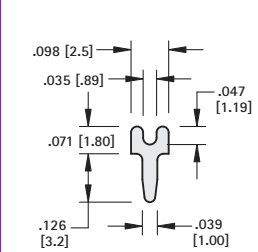
MATERIAL: .025 (.64) Brass

CAT. NO. 1036



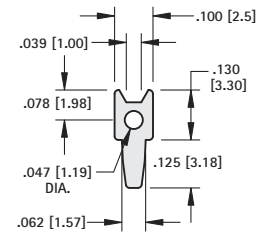
MATERIAL: .020 (.51) Brass

CAT. NO. 4953



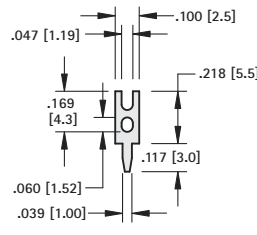
MATERIAL: .025 (.64) Brass

CAT. NO. 4950



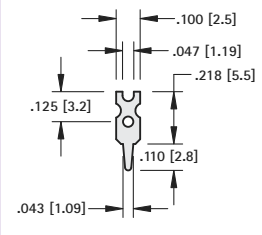
MATERIAL: .024 (.61) Brass

CAT. NO. 1032



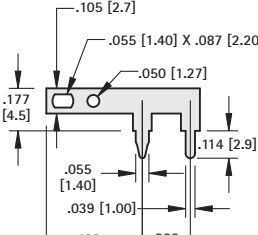
MATERIAL: .020 (.51) Brass

CAT. NO. 1035



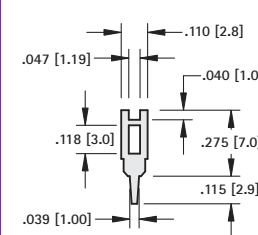
MATERIAL: .025 (.64) Brass

CAT. NO. 1034



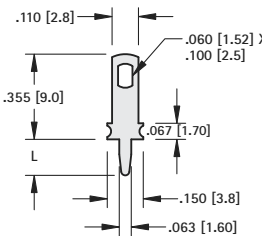
MATERIAL: .025 (.64) Brass

CAT. NO. 1045



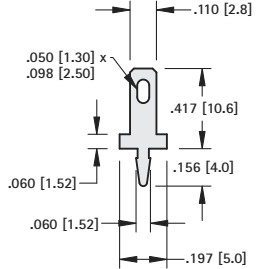
MATERIAL: .025 (.64) Brass

CAT. NO. 1040



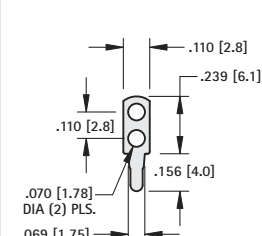
MATERIAL: .032 (.81) Brass

CAT. NO.	L
1041	.275 (7.0)
1046	.150 (3.8)



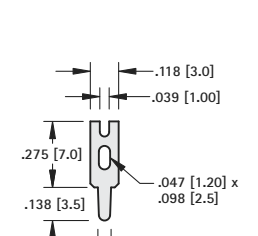
MATERIAL: .020 (.51) Brass

CAT. NO. 1250



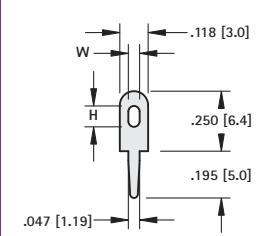
MATERIAL: .020 (.51) Brass

CAT. NO. 1038



MATERIAL: .025 (.64) Brass

CAT. NO. 4951

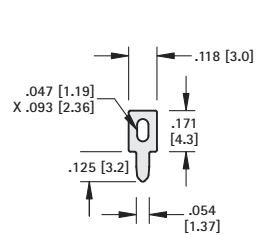


MATERIAL: .025 (.64) Brass

CAT. NO.	W	H
1249	.047 (1.19)	.087 (2.21)
4952	.063 (1.60)	.098 (2.49)

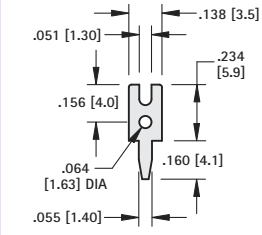
CUSTOM TERMINALS

Custom terminals can be machined to your exact specifications. Standard and special terminals can be staked onto special boards. Please email/fax your design to our Engineering Department.



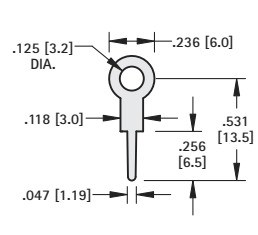
MATERIAL: .025 (.64) Brass

CAT. NO. 1033



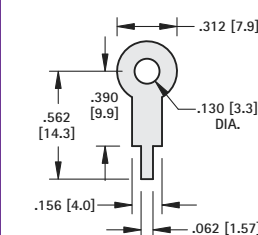
MATERIAL: .025 (.64) Brass

CAT. NO. 1039



MATERIAL: .020 (.51) Brass

CAT. NO. 4954



MATERIAL: .015 (.38) Brass

CAT. NO. 680