

# THM & SMT POLARIZED "CR2" • "CR123A" CELL HOLDERS

## FEATURES

- Battery installation and removal does not require tools
- UL 94V-0 Heat resistant Nylon Housings well suited for reflow or wave soldering

- Securely holds battery in place
- Polarized holder offers circuit protection against improper battery installation

## APPLICATIONS

- Computer memory, power backup systems
- Telecommunications/Security Systems
- PLC and industrial controls

## SPECIFICATIONS

Base: High Temp Nylon 46, UL Rated 94V-0

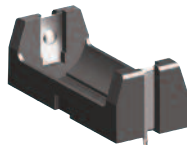
Operating temp range: -60°F to 293°F (-51°C to 145°C)

Contacts: .012 (.30) Stainless Steel, Gold Plate (Flash) - SMT

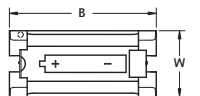
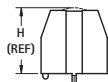
Contacts: .012 (.30) Stainless Steel, Tin-Nickel Plate - THM

### THM

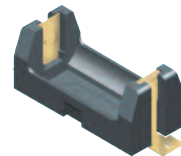
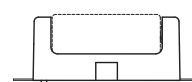
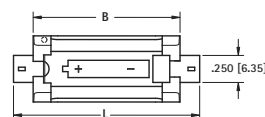
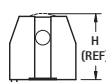
### SMT



Thru-Hole Mount (THM)

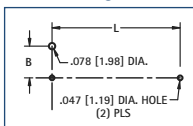


1018C  
RETAINER  
COVER  
FITS ALL  
HOLDERS



Surface Mount (SMT)

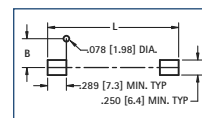
### Mounting Detail



CAT. NO.	MOUNTING STYLE	L	W	H (Ref)	B	G	CELL SIZE	PACKAGING SPEC'S
1010	SMT	1.723 (43.8)	.612 (15.5)	.661 (16.8)	1.360 (34.5)	.265 (6.7)	CR2	50 pieces per tray
1011	THM	1.156 (29.4)	.720 (18.3)	.712 (18.1)	1.690 (42.9)	.319 (8.1)	CR2	
1050	SMT	2.062 (52.4)	.720 (18.3)	.712 (18.1)	1.690 (42.9)	.319 (8.1)	CR123A	
1051*	THM	1.487 (37.8)	.720 (18.3)	.712 (18.1)	1.690 (42.9)	.319 (8.1)	CR123A	

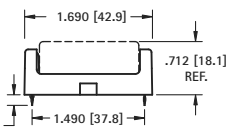
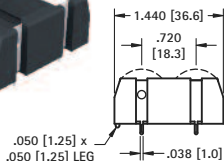
\*Base material: PBT UL 94V-0

### Mounting Detail

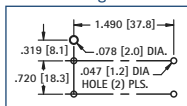


### THM DUAL CR123A

### SMT DUAL CR123A

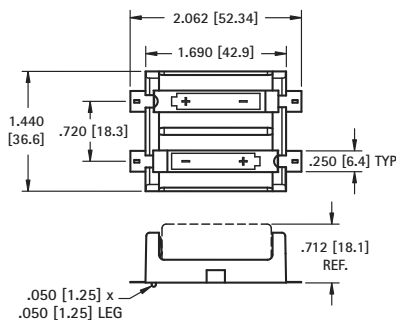


### Mounting Detail

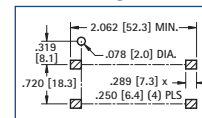


CAT. NO. 1079\*

\*Base material: PBT UL 94V-0



### Mounting Detail



CAT. NO. 1080

Packaging Spec's: 25 pieces per tray

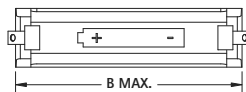
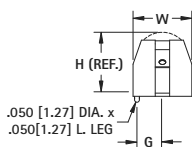
## IN-LINE LITHIUM-ION & ALKALINE HOLDERS

### SINGLE

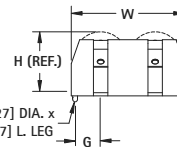
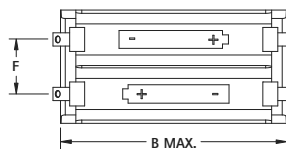
## SPECIFICATIONS

Contacts: .012 (.30) Phosphor Bronze, Tin-Nickel Plate

### DUAL



DWG. 1



DWG. 2

HOLDER	COVER	CAT. NO.	COVER	DWG NO.	W	H	B	F	G	CELL SIZE	BATTERY CROSS REFERENCE
1115	1024C	1	.612 (15.5)	.603 (15.3)	2.359 (59.9)		.265 (6.7)		"AA"	Energizer, Duracell, Panasonic, Sanyo, Varta, Rayovac, Tadiran	
1114*	1012C	2	1.180 (30.0)	.603 (15.3)	2.359 (59.9)	.568 (14.4)	.265 (6.7)		"AA"	Energizer, Duracell, Panasonic, Sanyo, Varta, Rayovac, Tadiran	
1117	1024C	1	.612 (15.5)	.603 (15.3)	1.360 (34.5)		.265 (6.7)		"1/2 AA"	Energizer 544, Duracell PX28L, Kodak K28A & KS28, Saft LCP3, Maxell 4LR44, Sanyo CR14250SE	
1119*	1018C	1	.720 (18.3)	.682 (17.3)	1.690 (42.9)		.319 (8.1)		"2/3 A"	Duracell DL2/3A, Kodak K123L, Saft 450SC & VR0450	
1120*	—	2	1.440 (36.6)	.682 (17.3)	1.690 (42.9)	.720 (18.3)	.319 (8.1)		"2/3 A"	Sanyo CR17335SE	

\*Base material: PBT UL 94V-0