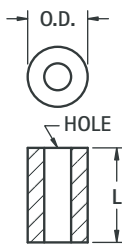


ROUND CLEAR HOLE SPACERS



BRASS



ALUMINUM



NYLON



MATERIAL: Brass: ASTM-B16, Nickel Plate (QQ-N-290) Aluminum: ASTM B211, Clear Iridite (MIL-C-5541) Nylon: Nylon 6/6, UL Rated 94V-2

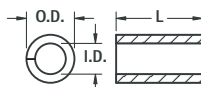
CLEAR HOLE	O.D.	L LENGTH	BRASS CAT. NO.	ALUMINUM CAT. NO.	NYLON CAT. NO.	CLEAR HOLE	O.D.	L LENGTH	BRASS CAT. NO.	ALUMINUM CAT. NO.	NYLON CAT. NO.
.120 (3.0) For #4	.250 (6.4)	.125 (3.2)	1909	2036	875	.170 (4.3) For #8	.250 (6.4)	.125 (3.2)	1942	4258	891
		.250 (6.4)	1454A	3457	776			.250 (6.4)	1480	3471	892
		.375 (9.5)	1454B	3458	877			.375 (9.5)	1481	3472	893
		.500 (12.7)	1454C	3459	878			.500 (12.7)	1482	3473	894
		.625 (15.9)	1919	2314	879			.625 (15.9)	3032	4259	895
		.750 (19.1)	1454D	3460	880			.750 (19.1)	1483	3474	896
		.875 (22.2)	1920	3402	881			.875 (22.2)	2033	4260	897
		1.000 (25.4)	1454E	3461	882			1.000 (25.4)	1484	3475	898
		1.500 (38.1)	1924	3462	779			1.500 (38.1)	2034	3476	799
2.000 (50.8)	1925	3463	—	2.000 (50.8)	2035	3477	—				
.140 (3.5) For #6	.250 (6.4)	.125 (3.2)	1934	3403	883	.196 (5.0) For #10	.312 (7.9)	—	—	—	—
		.250 (6.4)	1457A	3464	884			.250 (6.4)	1662	4261	790
		.375 (9.5)	1457B	3465	885			.375 (9.5)	1663	4262	791
		.500 (12.7)	1457C	3466	886			.500 (12.7)	1664	4263	792
		.625 (15.9)	1935	3429	887			.625 (15.9)	1665	4264	793
		.750 (19.1)	1457D	3467	888			.750 (19.1)	1666	4265	794
		.875 (22.2)	1936	3438	889			.875 (22.2)	1667	4266	795
		1.000 (25.4)	1457E	3468	890			1.000 (25.4)	1668	4267	796
		1.500 (38.1)	1937	3469	789			1.500 (38.1)	1669	4268	797
2.000 (50.8)	1938	3470	—	2.000 (50.8)	1672	4269	—				

* Visit our Parts Builder System online (www.keyelco.com) to see all of our spacer offerings.

ALUMINUM ECONOMY SPACERS



- Made of flat strip aluminum and rolled on precision equipment
- Assures maximum bearing surface, square ends
- Tight Joint on Outside Diameter



MATERIAL: Aluminum

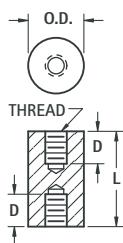
SPACER FOR	I.D.	O.D. REF.
# 4	.120 (3.0)	.167 (4.2)
# 6	.148 (3.8)	.193 (4.9)
# 8	.176 (4.5)	.232 (5.9)

L LENGTH	SCREW CLEARANCE		
	# 4 CAT. NO.	# 6 CAT. NO.	# 8 CAT. NO.
.187 (4.7)	397	—	—
.250 (6.4)	398	405	412
.312 (7.9)	399	406	413
.375 (9.5)	400	407	414
.437 (11.1)	401	408	415
.500 (12.7)	402	409	416
.625 (15.9)	403	410	417

L LENGTH	SCREW CLEARANCE		
	# 4 CAT. NO.	# 6 CAT. NO.	# 8 CAT. NO.
.750 (19.1)	418	425	432
.875 (22.2)	419	426	—
1.000 (25.4)	420	427	434
1.250 (31.8)	421	428	435
1.500 (38.1)	422	429	436
1.750 (44.5)	—	430	437
2.000 (50.8)	—	—	438

CERAMIC STANDOFFS

- Ideal for very high temperature conditions
- Commercial and military types available
- Military types meet MIL-1-010, NL # clearly marked
- Exceptional strength in compression and tension
- Withstands very high voltage without flashover
- Special sizes available upon request



COMMERCIAL

CAT. NO.	L LENGTH	O.D.	T THREAD	D DEPTH
7710	.250 (6.4)	.250 (6.4)	6-32	THRU
7711	.500 (12.7)	.250 (6.4)	6-32	.156 (4.0)
7712	.375 (9.5)	.375 (9.5)	6-32	.156 (4.0)
7713	.500 (12.7)	.375 (9.5)	6-32	.156 (4.0)
7714	.500 (12.7)	.500 (12.7)	6-32	.140 (3.6)
7715	.750 (19.1)	.500 (12.7)	6-32	.250 (6.4)
7716	1.000 (25.4)	.500 (12.7)	6-32	.375 (9.5)
7717	1.500 (38.1)	.500 (12.7)	6-32	.562 (14.3)
7718	2.500 (63.5)	.500 (12.7)	6-32	.500 (12.7)
7719	2.500 (63.5)	.750 (19.1)	1/4 - 20	.750 (19.1)
7720	4.000 (101.6)	.750 (19.1)	1/4 - 20	.750 (19.1)

MILITARY

CAT. NO.	L LENGTH	O.D.	T THREAD	D DEPTH	NL #
7661	.500 (12.7)	.375 (9.5)	6-32	.156 (4.0)	NL523W01-004
7662	.625 (15.9)	.375 (9.5)	6-32	.250 (6.4)	NL523W01-005
7663	.625 (15.9)	.500 (12.7)	8-32	.187 (4.7)	NL523W02-005
7664	.750 (19.1)	.375 (9.5)	6-32	.250 (6.4)	NL523W01-006
7665	.750 (19.1)	.500 (12.7)	8-32	.250 (6.4)	NL523W02-006
7666	1.000 (25.4)	.375 (9.5)	6-32	.375 (9.5)	NL523W01-008
7667	1.000 (25.4)	.500 (12.7)	8-32	.375 (9.5)	NL523W02-008
7668	1.000 (25.4)	.750 (19.1)	10-32	.375 (9.5)	NL523W03-008
7669	1.250 (31.8)	.375 (9.5)	6-32	.375 (9.5)	NL523W01-010
7670	1.250 (31.8)	.500 (12.7)	8-32	.375 (9.5)	NL523W02-010
7671	1.250 (31.8)	1.000 (25.4)	1/4 - 20	.437 (11.1)	NL523W04-010
7672	1.500 (38.1)	.375 (9.5)	6-32	.375 (9.5)	NL523W01-012
7673	1.500 (38.1)	.500 (12.7)	8-32	.375 (9.5)	NL523W02-012
7674	1.500 (38.1)	.750 (19.1)	10-32	.375 (9.5)	NL523W03-012
7675	1.500 (38.1)	1.000 (25.4)	1/4 - 20	.500 (12.7)	NL523W04-012
7676	2.000 (50.8)	.375 (9.5)	6-32	.375 (9.5)	NL523W01-016
7677	2.000 (50.8)	.500 (12.7)	8-32	.375 (9.5)	NL523W02-016
7678	2.000 (50.8)	.750 (19.1)	10-32	.375 (9.5)	NL523W03-016

MATERIAL: Grade L5 Ceramic