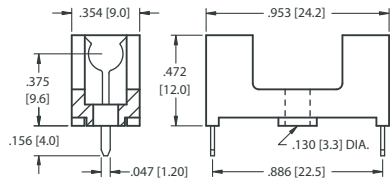


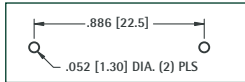
5mm x 20mm FUSE HOLDERS

5mm & 3AG FUSE HOLDERS

SLIM LINE



Mounting Detail



SPECIFICATIONS

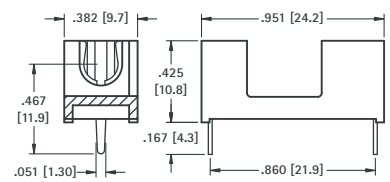
Base & Cover: Nylon,
UL Rated 94V-0
Clips: Brass, Tin Plate
Rated: 5 Amps @ 250V AC

CAT. NO. 4628 - Holder

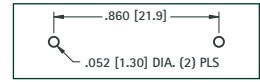
CAT. NO. 4628C - Cover only (with window)

- Optional cover with window protects and insulates fuse
- Flame Retardant
- Not UL rated

LOW PROFILE



Mounting Detail



SPECIFICATIONS

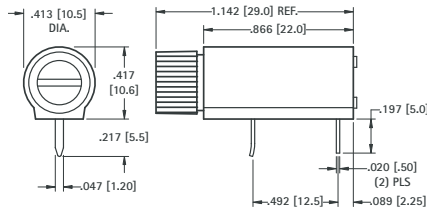
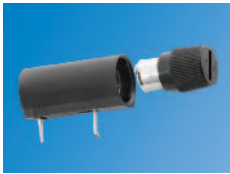
Base & Cover: Nylon,
UL Rated 94V-0
Clips: Brass, Tin Plate
Rated: 5 Amps @ 250V AC

CAT. NO. 4527 - Holder

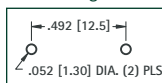
CAT. NO. 4527C - Cover only

- Low profile, space saving design
- Optional cover protects and insulates fuse
- Flame Retardant
- Not UL rated

FULLY INSULATED



Mounting Detail



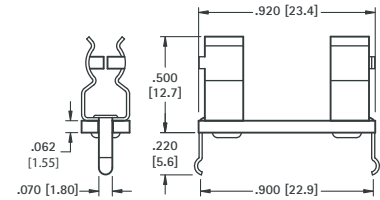
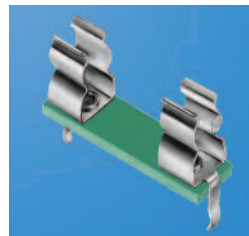
SPECIFICATIONS

Base: PBT
Contacts: Brass, Tin Plate
Rated: 10 Amps @ 250V AC

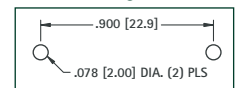
CAT. NO. 4525

- Supplied unassembled
- Shock resistant
- Fuse can be accessed from board edge
- Fuse is completely enclosed, protecting use from shorting and breaking
- Not UL rated

PC SNAP-IN



Mounting Detail



SPECIFICATIONS

Base: .062 (1.57) FR-4, UL Rated 94V-0
Clips: Brass, Tin Plate
UL Rated: 6.3 Amps @ 250V AC

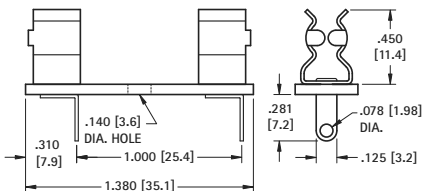
CAT. NO. 3527 - Holder

- Snap-in design for wave soldering
- Flame Retardant
- Optional cover protects and insulates fuse - **Cat. No. 3527C**

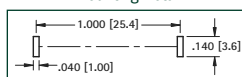
3AG FUSE HOLDERS



TERMINATION LUGS CAN BE USED WITH WIRES OR PC MOUNT



Mounting Detail



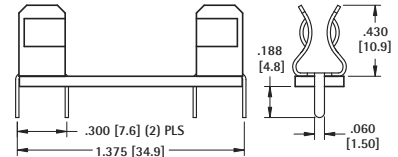
SPECIFICATIONS

Base: .062 (1.57) FR-4, UL Rated 94V-0
Clips: Brass, Tin Plate
UL Rated: 15 Amps @ 500VAC

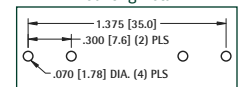
CAT. NO. 3526

Optional cover available - **Cat. No. 4245C**

PRESS-FIT, IDEAL FOR WAVE SOLDERING



Mounting Detail



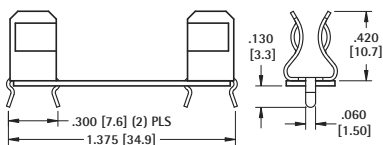
SPECIFICATIONS

Base: .062 (1.57) FR-4, UL Rated 94V-0
Clips: Brass, Tin Plate
UL Rated: 15 Amps @ 500VAC

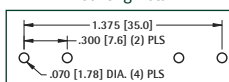
CAT. NO. 4245

Optional cover available - **Cat. No. 4245C**

SNAP-IN DESIGN ASSURES STABILITY DURING WAVE SOLDERING



Mounting Detail



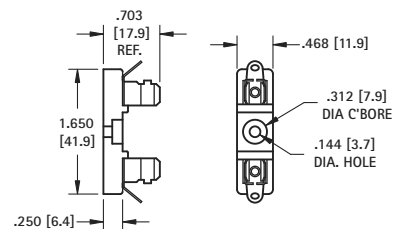
SPECIFICATIONS

Base: .032 (.79) FR-4, UL Rated 94V-0
Clips: Brass, Tin Plate
UL Rated: 15 Amps @ 500VAC

CAT. NO. 4250

Optional cover available - **Cat. No. 4245C**

MOLDED CASE



SPECIFICATIONS

Base: LCP, UL Rated 94V-0
Clips: Brass - Nickel Plated
UL Rated: 15 Amps @ 250 VAC

CAT. NO. 3523

Optional cover available - **Cat. No. 4245C**

Mounting Hole:
.144 (3.7) Dia.