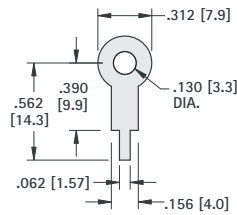


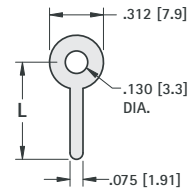


## PC TERMINAL LUGS



MATERIAL: .016 (.41) Brass, Tin Plate

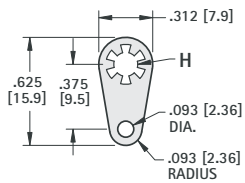
CAT. NO. 680



MATERIAL: .020 (.51) Brass, Tin Plate

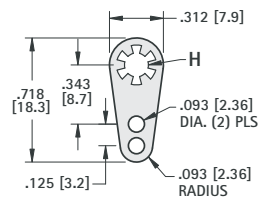
CAT. NO.	L
4000	.500 (12.7)
4001	.562 (14.3)
4002	.750 (19.1)
4003	1.000 (25.4)

## LOCKWASHER TERMINAL LUGS



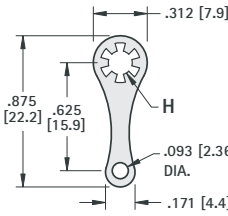
MATERIAL: .018 (.46) Brass, Tin Plate

CAT. NO.	H	STUD SIZE
908	.120 (3.1)	#4
914	.140 (3.6)	#6
915	.171 (4.3)	#8



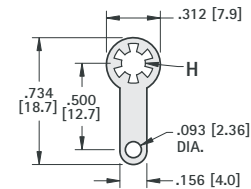
MATERIAL: .018 (.46) Brass, Tin Plate

CAT. NO.	H	STUD SIZE
910	.120 (3.1)	#4
918	.140 (3.6)	#6
906	.171 (4.3)	#8



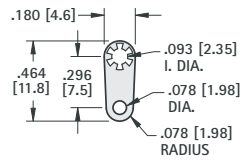
MATERIAL: .018 (.46) Brass, Tin Plate

CAT. NO.	H	STUD SIZE
903	.120 (3.1)	#4
904	.140 (3.6)	#6
905	.171 (4.3)	#8
913	.196 (5.0)	#10



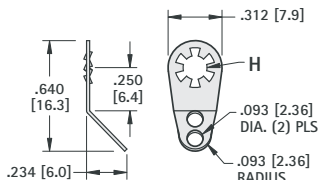
MATERIAL: .018 (.46) Brass, Tin Plate

CAT. NO.	H	STUD SIZE
909	.120 (3.1)	#4
916	.140 (3.6)	#6
917	.171 (4.3)	#8



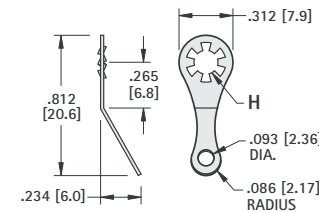
MATERIAL: .013 (.33) Brass, Tin Plate

CAT. NO. 907



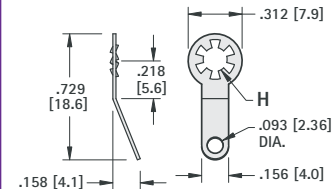
MATERIAL: .018 (.46) Brass, Tin Plate

CAT. NO.	H	STUD SIZE
7311	.120 (3.1)	#4
7312	.140 (3.6)	#6
7313	.171 (4.3)	#8



MATERIAL: .018 (.46) Brass, Tin Plate

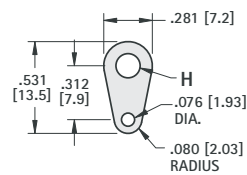
CAT. NO.	H	STUD SIZE
7317	.120 (3.1)	#4
7318	.140 (3.6)	#6
7319	.171 (4.3)	#8
4704	.196 (5.0)	#10



MATERIAL: .018 (.46) Brass, Tin Plate

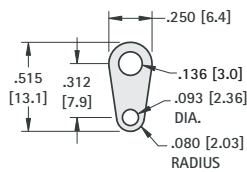
CAT. NO.	H	STUD SIZE
7314	.120 (3.1)	#4
7315	.140 (3.6)	#6
7316	.171 (4.3)	#8

## SOLDER TERMINAL LUGS



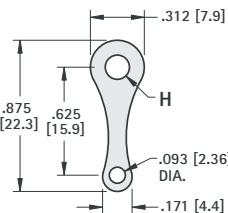
MATERIAL: .015 (.38) Brass, Tin Plate

CAT. NO.	H	STUD SIZE
7328	.120 (3.1)	#4
7329	.140 (3.6)	#6
7330	.171 (4.3)	#8



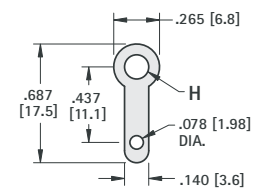
MATERIAL: .016 (.41) Brass, Tin Plate

CAT. NO. 4004



MATERIAL: .020 (.51) Brass, Tin Plate

CAT. NO.	H	STUD SIZE
7331	.120 (3.1)	#4
7332	.140 (3.6)	#6
7333	.171 (4.3)	#8
7310	.196 (5.0)	#10



MATERIAL: .020 (.51) Brass, Tin Plate

CAT. NO.	H	STUD SIZE
7325	.120 (3.1)	#4
7326	.140 (3.6)	#6
7327	.171 (4.3)	#8
7340	.196 (5.0)	#10