

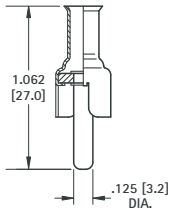
## PHONO PLUGS

- Mates with .125 (3.2) diameter jacks

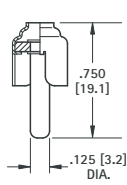
### CONVENTIONAL TYPE

#### MATERIAL:

**Shell:** Brass, Nickel Plate  
**Pin:** Brass, Nickel Plate



**CAT. NO. 561** - Crimp Type



**CAT. NO. 567** - Conventional Type

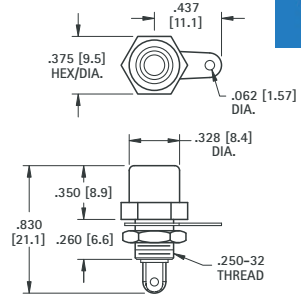
## PANEL MOUNT PHONO JACKS

- Mates with .125 (3.2) dia. pin
- Mounts to panel in .296 (7.6) dia. hole
- Color coded for ease of identification
- Complete with nut and solder lug



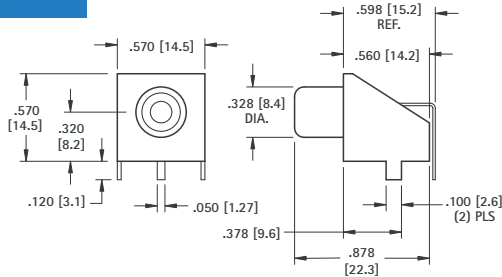
**MATERIAL:** Brass, Nickel Plate

HEX BASE CAT. NO.	INSULATOR COLOR	ROUND BASE CAT. NO.
581	WHITE	598
582	RED	580
576	BLACK	574
583	YELLOW	599

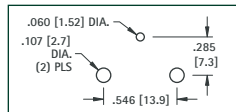


## 90° PC PHONO JACK

- Complete one piece jack for insertion into PC board
- Time Saving
- No Wiring Required
- Black insulator ring



#### Mounting Detail



#### MATERIAL:

**Base:** Steel, Tin Plate  
**Shell:** Steel, Nickel Plate  
**Contact:** Brass, Tin Plate

**CAT. NO. 902**

## SNAP-FIT 90° PC PHONO JACKS

### CHOICE OF TIN OR GOLD PLATE

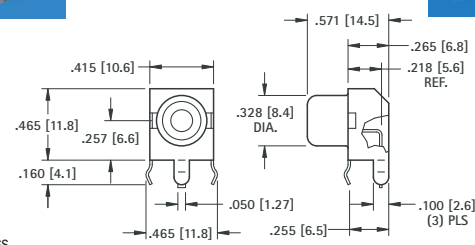
- Complete one piece jack for insertion into PC board
- Time Saving
- No Wiring Required
- Snap-fits into PC board



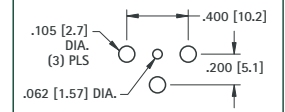
#### MATERIAL:

**Shell:** Steel  
**Contact:** Brass  
**Plating:** Tin or Gold Plate

TIN PLATE CAT. NO.	INSULATOR COLOR	GOLD PLATE CAT. NO.
587	WHITE	936
588	RED	937
901	BLACK	900
589	YELLOW	938



#### Mounting Detail



## SNAP-FIT VERTICAL PC PHONO JACKS

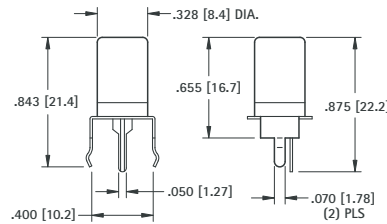
- Extra long, one piece shell to accept plugs with longer pins for greater contact
- Snaps into holes on PC board and firmly held for soldering
- No staking required



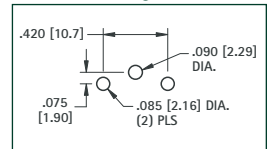
CAT. NO.	INSULATOR COLOR
584	WHITE
577	RED
585	BLACK
586	YELLOW

#### MATERIAL:

**Shell:** Steel, Nickel Plate  
**Contact:** Brass, Tin Plate

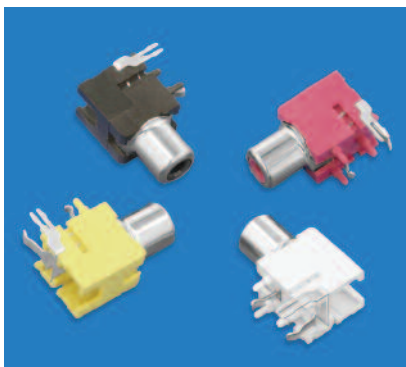


#### Mounting Detail

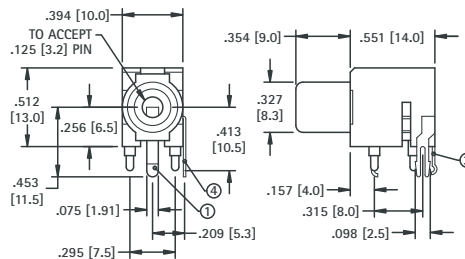


## COLOR KEYED PC PHONO JACKS

- Mates with .125 (3.2) diameter pins
- Features a normally closed circuit
- Snap-fit mounting for positive retention during wave soldering
- Various colors for circuit identification



CAT. NO.	INSULATOR COLOR
970	WHITE
971	RED
972	BLACK
973	YELLOW



### SCHEMATIC



#### SPECIFICATIONS

**Housing:** PBT  
**Ground Terminal:** .020 (.51) Brass, Nickel Plate  
**Spring Contact:** .012 (.30) Phosphor Bronze, Silver Plate  
**Shunt Terminal:** .016 (.41) Brass, Silver Plate