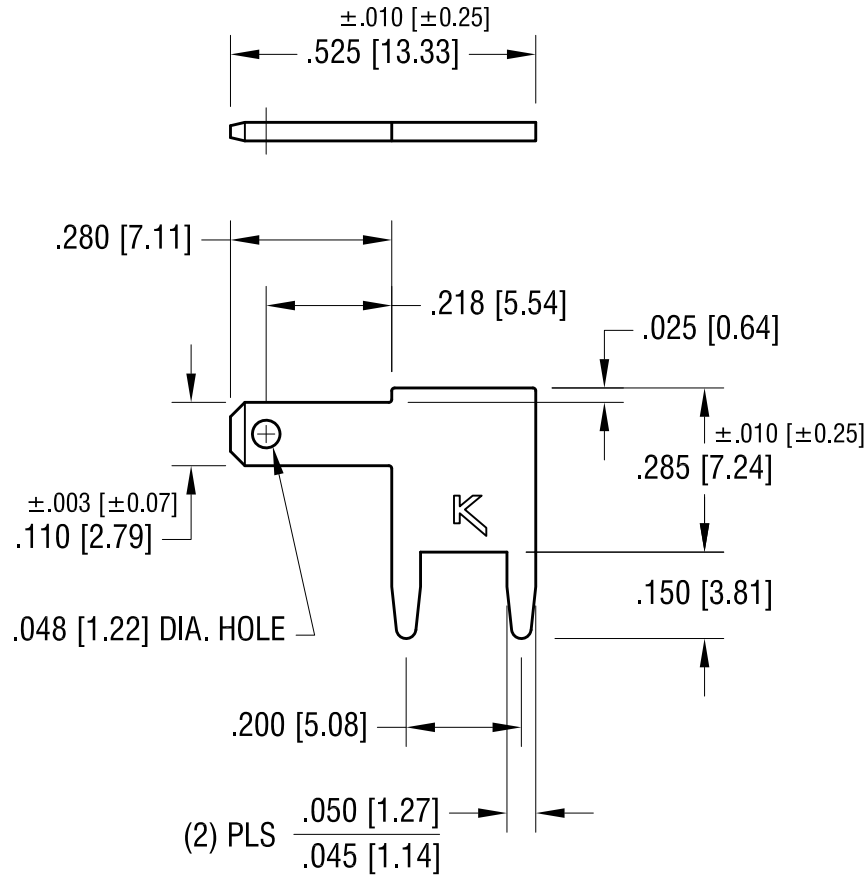
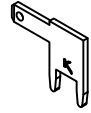


THIS DOCUMENT IS THE PROPERTY OF
KEYSTONE ELECTRONICS CORP. AND
SHALL NOT BE REPRODUCED, DISTRIBUTED
OR USED AS A BASIS FOR MANUFACTURE
WITHOUT PRIOR WRITTEN PERMISSION
FROM KEYSTONE ELECTRONICS CORP.

ACTUAL SIZE



NOTE:

MOUNTING HOLE SIZE:
 $.052$ [1.32] DIA.

8.28.12	CHANGE AS PER ECN 12-119	C
6.10.09	CHANGE AS PER ECN 09-065	B
12.27.00	CHANGE AS PER ECN 00-126	A
DATE	DESCRIPTION	REV.

KEYSTONE ELECTRONICS CORP.			
www.keyelco.com • ASTORIA, N.Y. 11105-2017 • Tel (718) 956-8900			
PART NAME			
$.110$ [2.79] PC QUICK-FIT TERMINAL			
MATERIAL			
$.032$ [0.81] TH'K BRASS			
FINISH		DRN BY	DATE
MATTE TIN PLATE		BOONE	8.1.95
		APP'D	SCALE
		LN	3X
TOLERANCES	INCH [MM]	CODE	DWG NO.
DECIMAL	$\pm .005$ [± 0.15]	C	4906
ANGULAR	$\pm 1^\circ$		
UNLESS OTHERWISE SPECIFIED			