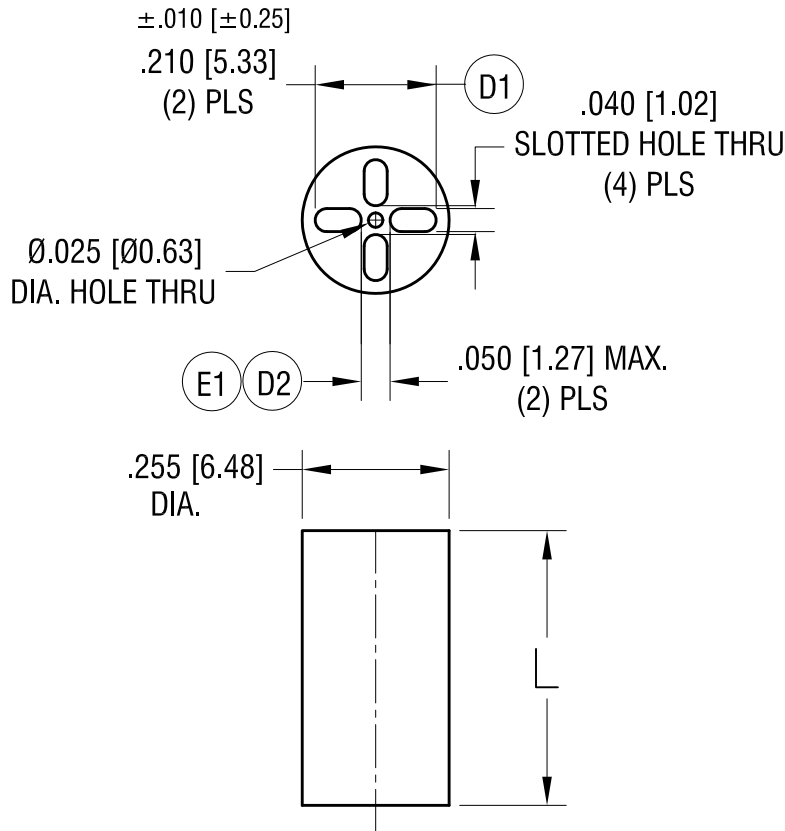


THIS DOCUMENT IS THE PROPERTY OF  
KEYSTONE ELECTRONICS CORP. AND  
SHALL NOT BE REPRODUCED, DISTRIBUTED  
OR USED AS A BASIS FOR MANUFACTURE  
WITHOUT PRIOR WRITTEN PERMISSION  
FROM KEYSTONE ELECTRONICS CORP.

**ACTUAL SIZE**



P/N 8904



PART NO.	'L' DIM.
8900	.120 [3.04]
8901	.140 [3.55]
8902	.160 [4.06]
8903	.180 [4.57]
8904	.200 [5.08]
8905	.220 [5.58]
8906	.240 [6.09]
8907	.250 [6.35]
8908	.260 [6.60]
8909	.280 [7.11]
8910	.300 [7.62]
8911	.320 [8.12]
8912	.340 [8.63]
8913	.350 [8.89]
8914	.360 [9.14]
8915	.380 [9.65]

5.15.23	(E1) WAS $.060 \pm .010$ CHANGE AS PER ECN 23-081	E
6.21.22	(D1) WAS $.210 \pm .005$ , (D2) WAS $.060 \pm .005$ CHANGE AS PER ECN 22-097	D
5.26.11	CHANGE AS PER ECN 11-069	C
6.30.00	CHANGE AS PER ECN 00-059	B
4.6.98	CHANGE AS PER ECR 98-024	A
DATE	DESCRIPTION	REV.

<b>KEYSTONE ELECTRONICS CORP.</b>			
www.keyelco.com • NEW HYDE PARK NY 11040 • Tel (516)328-7500			
PART NAME		LED SPACER MOUNT	
MATERIAL		PVC UL 94V-0 (BLACK)	
FINISH	-	DRN BY	BOONE
		DATE	3.30.95
		APP'D	RH
		SCALE	3X
TOLERANCES	INCH [MM]	CODE	DWG NO.
DECIMAL	$\pm .005$ [ $\pm 0.13$ ]	C	<b>8900-8915</b>
ANGULAR	$\pm 1^\circ$		
UNLESS OTHERWISE SPECIFIED			