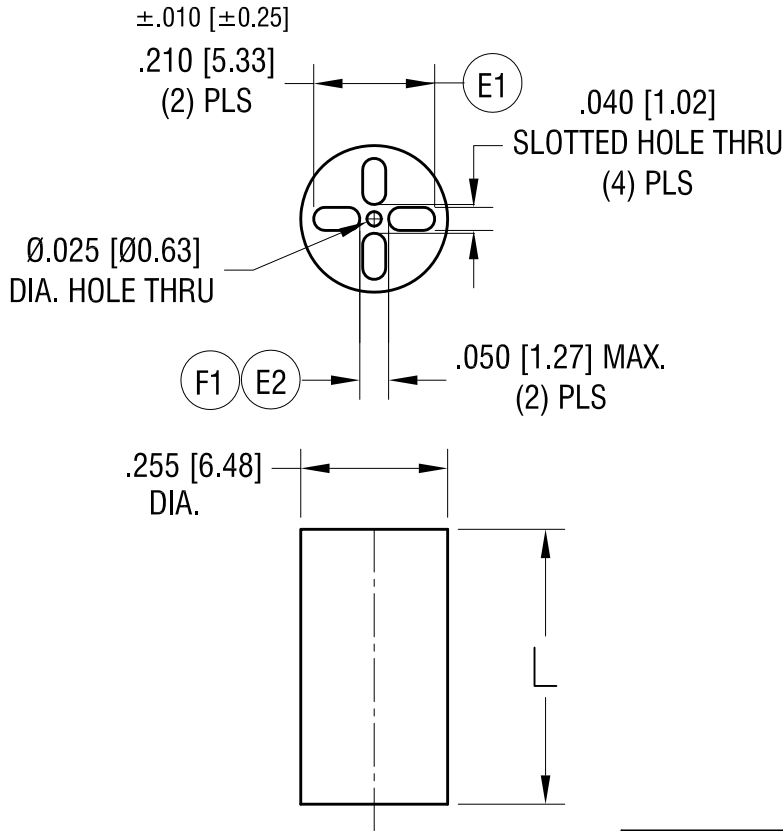


THIS DOCUMENT IS THE PROPERTY OF KEYSTONE ELECTRONICS CORP. AND SHALL NOT BE REPRODUCED, DISTRIBUTED OR USED AS A BASIS FOR MANUFACTURE WITHOUT PRIOR WRITTEN PERMISSION FROM KEYSTONE ELECTRONICS CORP.

ACTUAL SIZE
P/N 8916



PART NO.	'L' DIM.
8916	.400 [10.16]
8917	.420 [10.66]
8918	.440 [11.17]
8919	.450 [11.43]
8920	.460 [11.68]
8921	.480 [12.19]
8922	.500 [12.70]

DATE	DESCRIPTION	REV.
5.15.23	(F1) WAS .060±.010 CHANGE AS PER ECN 23-082	F
6.21.22	(E1) WAS .210±.005, (E2) WAS .060±.005 CHANGE AS PER ECN 22-096	E
3.26.21	SPLIT TO GROUP PER TOLERANCES CHANGE AS PER ECN 21-030	D
5.26.11	CHANGE AS PER ECN 11-070	C
6.30.00	CHANGE AS PER ECN 00-059	B
4.6.98	CHANGE AS PER ECN 98-024	A

KEYSTONE ELECTRONICS CORP.
www.keyelco.com • NEW HYDE PARK, NY 11040 • Tel (516) 328-7500

PART NAME: LED SPACER MOUNT

MATERIAL: PVC UL 94V-0 (BLACK)

FINISH: NONE

DRN BY: NT DATE: 3.26.21

APP'D: RH SCALE: 3X

TOLERANCES INCH [MM]
DECIMAL ± .005 [± 0.13]
ANGULAR ± 1°
UNLESS OTHERWISE SPECIFIED

CODE: C

DWG NO. 8916 - 8922