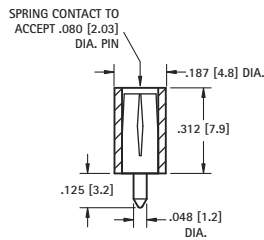


# .080 [2.0] PC TEST JACKS



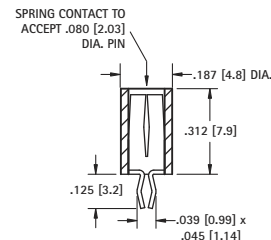
## VERTICAL



CAT. NO.	COLOR
6036	WHITE
6037	RED
6038	BLACK
6039	YELLOW
6040	GREEN
6041	BLUE

**MATERIAL:**  
**Body:** Nylon 6/6 ASTM D4066  
**Contact:** Brass, Silver Plate

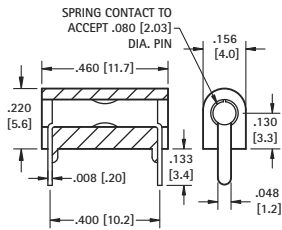
## SNAP-FIT VERTICAL



CAT. NO.	COLOR
6042	WHITE
6043	RED
6044	BLACK
6045	YELLOW
6046	GREEN
6047	BLUE

**MATERIAL:**  
**Body:** Nylon 6/6 ASTM D4066  
**Contact:** Beryllium Copper, Silver Plate  
**Mounting:** Snap-fits into .052 (1.32) hole

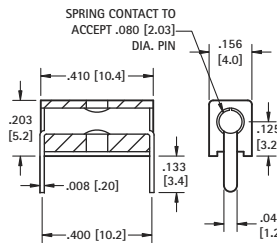
## LOW PROFILE HORIZONTAL



GOLD PLATE CAT. NO.	COLOR	SILVER PLATE CAT. NO.
6060	WHITE	6066
6061	RED	6067
6062	BLACK	6068
6063	YELLOW	6069
6064	GREEN	6070
6065	BLUE	6071

**MATERIAL:**  
**Body:** Nylon 6/6 ASTM D4066  
**Contact:** Beryllium Copper, Gold or Silver Plate

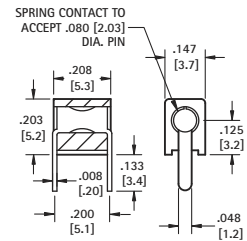
## HORIZONTAL/VERTICAL



CAT. NO.	COLOR
6054	WHITE
6055	RED
6056	BLACK
6057	YELLOW
6058	GREEN
6059	BLUE

**MATERIAL:**  
**Body:** Nylon 6/6 ASTM D4066  
**Contact:** Beryllium Copper, Silver Plate

## MINIATURE HORIZONTAL



CAT. NO.	COLOR
6048	WHITE
6049	RED
6050	BLACK
6051	YELLOW
6052	GREEN
6053	BLUE

**MATERIAL:**  
**Body:** Nylon 6/6 ASTM D4066  
**Contact:** Beryllium Copper, Silver Plate

## HIGH TEMPERATURE PTFE INSULATED TEST POINT JACKS

### SPECIFICATIONS

**Terminal Jack:** Beryllium Copper (QQ-C-533)  
 \*Brass ASTM B16

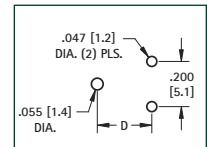
**Plating:** Gold per MIL-G-45204, Type II

**Operating Temperature:** -60°F to +500°F (-50°C to 260°C)

### Bushing:

White PTFE **RoHS** (RoHS Compliant)

Red or Black PTFE **RoHS** (Non-RoHS Compliant)



Mounting Detail



FIG. 1

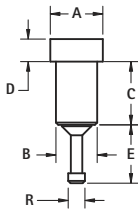


FIG. 2

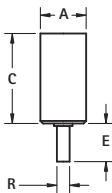
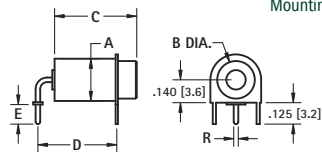


FIG. 3



RoHS		NON-RoHS									Accepts	
White	Red	Black	FIG.	A	B	C	D	E	R	Tip Dia. ± .001 (.03)	Tip Length	
<b>11001</b>	<b>11001-R</b>	<b>11001-B</b>	1	.142 (3.6)	.120 (3.1)	.244 (6.2)	.046 (1.2)	.120 (3.1)	.060 (1.5)	.040 (1.0)	.205 (5.2)	
<b>11002</b>	<b>11002-R</b>	<b>11002-B</b>	1	.142 (3.6)	.120 (3.1)	.283 (7.2)	.046 (1.2)	.120 (3.1)	.060 (1.5)	.040 (1.0)	.245 (6.2)	
<b>11003</b>	<b>11003-R</b>	<b>11003-B</b>	1	.172 (4.4)	.140 (3.6)	.142 (3.6)	.050 (1.3)	.060 (1.5)	.080 (2.0)	.040 (1.0)	.125 (3.2)	
<b>11004</b>	<b>11004-R</b>	<b>11004-B</b>	1	.172 (4.4)	.148 (3.8)	.179 (4.5)	.046 (1.2)	.120 (3.1)	.060 (1.5)	.040 (1.0)	.140 (3.6)	
<b>11005</b>	<b>11005-R</b>	<b>11005-B</b>	1	.218 (5.5)	.185 (4.7)	.301 (7.6)	.050 (1.3)	.105 (2.7)	.125 (3.2)	.080 (2.0)	.315 (8.0)	
<b>11006</b>	<b>11006-R</b>	<b>11006-B</b>	1	.218 (5.5)	.185 (4.7)	.271 (6.9)	.046 (1.2)	.120 (3.1)	.074 (1.9)	.080 (2.0)	.195 (4.9)	
<b>11007</b>	<b>11007-R</b>	<b>11007-B</b>	1	.218 (5.5)	.185 (4.7)	.271 (6.9)	.046 (1.2)	.120 (3.1)	.074 (1.9)	.090 (2.3)	.195 (4.9)	
<b>11008</b>	<b>11008-R</b>	<b>11008-B</b>	1	.218 (5.5)	.185 (4.7)	.301 (7.6)	.046 (1.2)	.120 (3.1)	.074 (1.9)	.080 (2.0)	.225 (5.7)	
<b>11009</b>	<b>11009-R</b>	<b>11009-B</b>	1	.218 (5.5)	.185 (4.7)	.400 (10.2)	.050 (1.3)	.187 (4.8)	.074 (1.9)	.080 (2.0)	.280 (7.1)	
<b>11010</b>	<b>11010-R</b>	<b>11010-B</b>	1	.218 (5.5)	.185 (4.7)	.271 (6.9)	.046 (1.2)	.136 (3.5)	.074 (1.9)	.080 (2.0)	.268 (6.8)	
<b>11011</b>	<b>11011-R</b>	<b>11011-B</b>	2	.218 (5.5)	-	.430 (10.9)	-	.150 (3.8)	.050 (1.3)	.080 (2.0)	.200 (5.1)	
<b>11012*</b>	<b>11012-R*</b>	<b>11012-B*</b>	2	.218 (5.5)	-	.500 (12.7)	-	.150 (3.8)	.050 (1.3)	.080 (2.0)	.280 (7.1)	
<b>11013</b>	<b>11013-R</b>	<b>11013-B</b>	3	.218 (5.5)	.187 (4.8)	.689 (17.5)	.500 (12.7)	.125 (3.2)	.050 (1.3)	.080 (2.0)	.500 (12.7)	
<b>11014</b>	<b>11014-R</b>	<b>11014-B</b>	3	.218 (5.5)	.187 (4.8)	.378 (9.6)	.400 (10.2)	.125 (3.2)	.050 (1.3)	.080 (2.0)	.250 (6.4)	
<b>11015</b>	<b>11015-R</b>	<b>11015-B</b>	3	.218 (5.5)	.187 (4.8)	.378 (9.6)	.400 (10.2)	.187 (4.7)	.035 (.89)	.080 (2.0)	.250 (6.4)	
<b>11016</b>	<b>11016-R</b>	<b>11016-B</b>	3	.218 (5.5)	.187 (4.8)	.378 (9.6)	.500 (12.7)	.125 (3.2)	.050 (1.3)	.080 (2.0)	.250 (6.4)	

\* Terminal Material: Brass ASTM B16