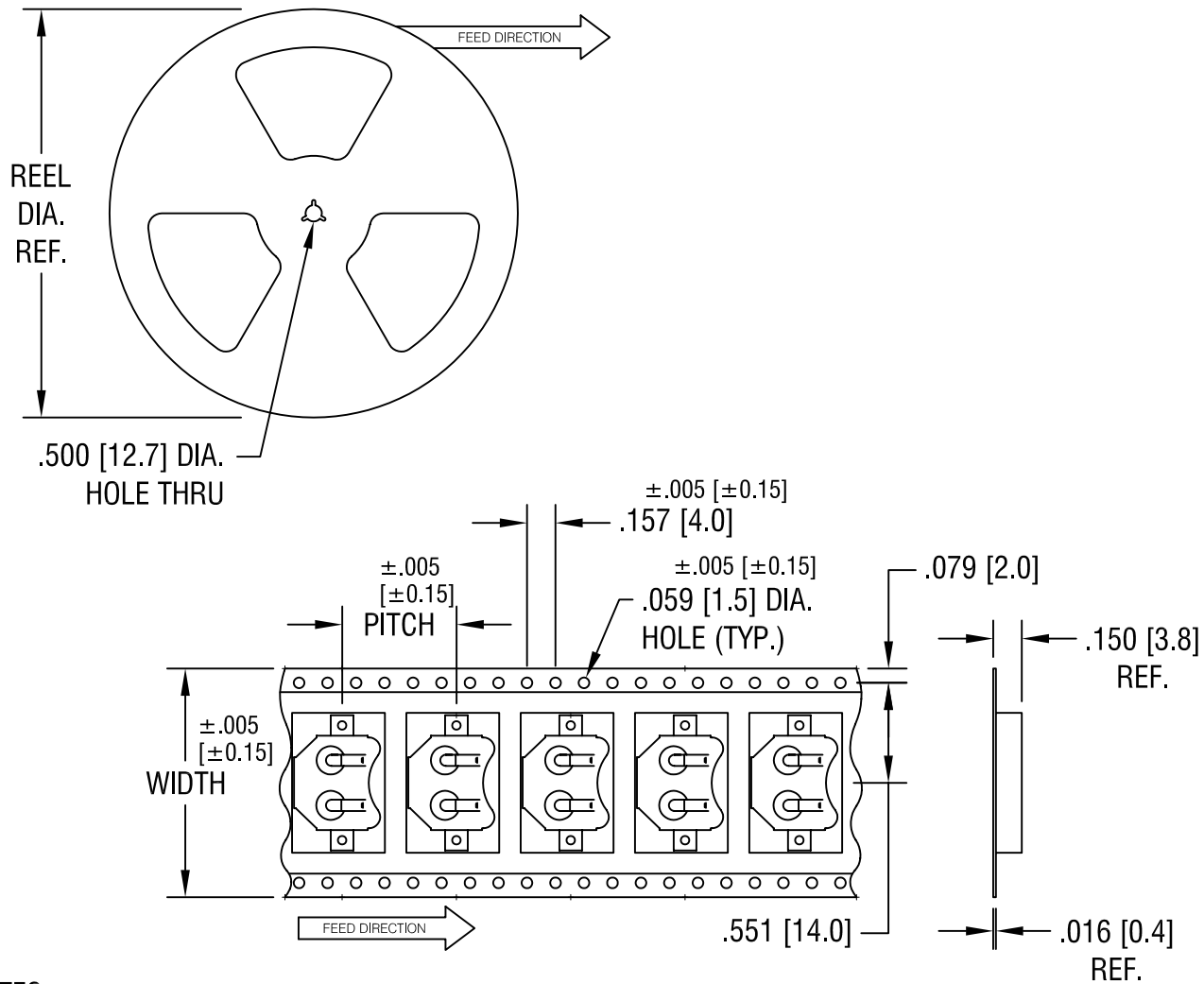


THIS DOCUMENT IS THE PROPERTY OF KEYSTONE ELECTRONICS CORP. AND SHALL NOT BE REPRODUCED, DISTRIBUTED OR USED AS A BASIS FOR MANUFACTURE WITHOUT PRIOR WRITTEN PERMISSION FROM KEYSTONE ELECTRONICS CORP.



NOTES:

TAPE AND REEL SPECIFICATIONS:

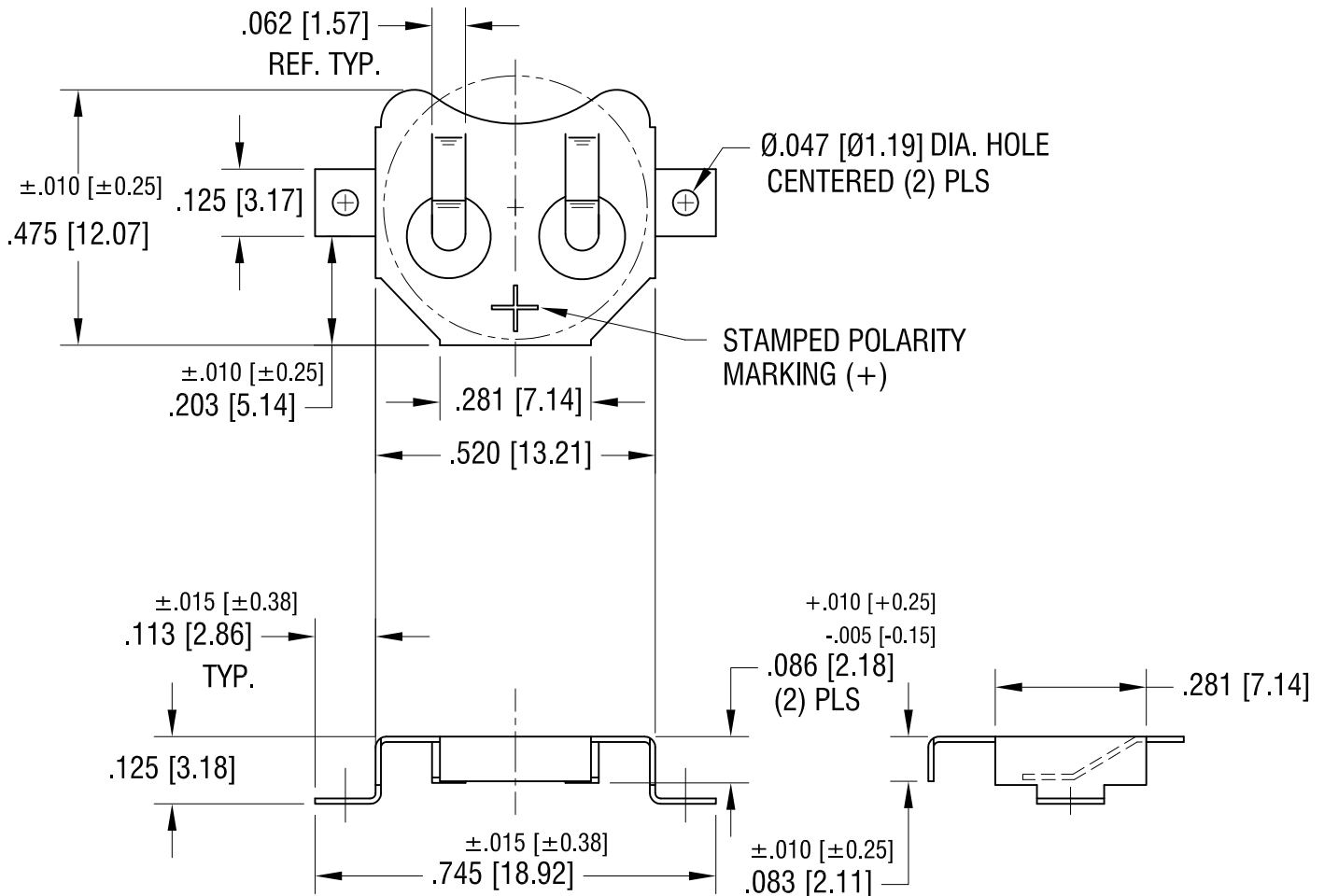
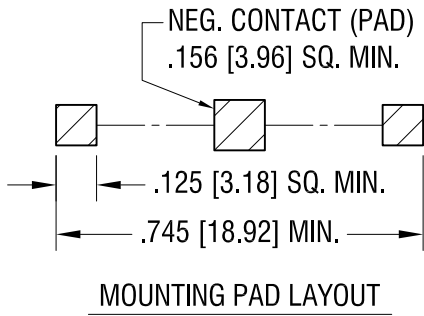
1. TAPE:  
 MAT'L - ALL CONDUCTIVE POLYSTYRENE CARRIER  
 ANSI/EIA-481 STANDARD  
 1.260 [32.0] WIDE; .630 [16.0] PITCH
2. REEL:  
 13.0 [330.2] DIA. 1000 PIECES OF  
 PART NO. 3000 PER REEL.

<b>KEYSTONE ELECTRONICS CORP.</b>			
ASTORIA, N.Y. 11105-2017			
PART NAME			
12mm SM COIN CELL CLIP ON TAPE			
MATERIAL			
AS NOTED			
FINISH		DRN BY	DATE
AS NOTED		BOONE	2.28.00
		APP'D	SCALE
		LN	X
TOLERANCES		DWG NO.	
INCH	[MM]	<b>3000TR</b>	
DECIMAL	± .015 [± 0.38]		
ANGULAR	± 1°		
UNLESS OTHERWISE SPECIFIED		C/M	

4.17.06	CHANGE AS PER ECN 06-023	B
10.16.03	CHANGE AS PER ECN 03-075	A
DATE	DESCRIPTION	REV.

THIS DOCUMENT IS THE PROPERTY OF  
KEYSTONE ELECTRONICS CORP. AND  
SHALL NOT BE REPRODUCED, DISTRIBUTED  
OR USED AS A BASIS FOR MANUFACTURE  
WITHOUT PRIOR WRITTEN PERMISSION  
FROM KEYSTONE ELECTRONICS CORP.

ACTUAL SIZE



**KEYSTONE ELECTRONICS CORP.**

www.keyelco.com • ASTORIA, N.Y. 11105-2017 • Tel (718) 956-8900

PART NAME		12mm SM COIN CELL CLIP	
MATERIAL			
.010 [0.25] TH'K PHOSPHOR BRONZE			
FINISH		DRN BY	DATE
TIN NICKEL PLATE		BOONE	10.14.94
		APP'D	SCALE
		LN	3X
TOLERANCES	INCH [MM]	CODE	DWG NO.
DECIMAL	± .005 [± 0.15]	C	3000
ANGULAR	± 1°		
UNLESS OTHERWISE SPECIFIED			

12.16.16	CHANGE AS PER ECN 16-104	M
5.07.15	CHANGE AS PER ECN 15-049	L
6.20.08	CHANGE AS PER ECN 08-111	K
9.22.06	CHANGE AS PER ECN 06-053	J
DATE	DESCRIPTION	REV.