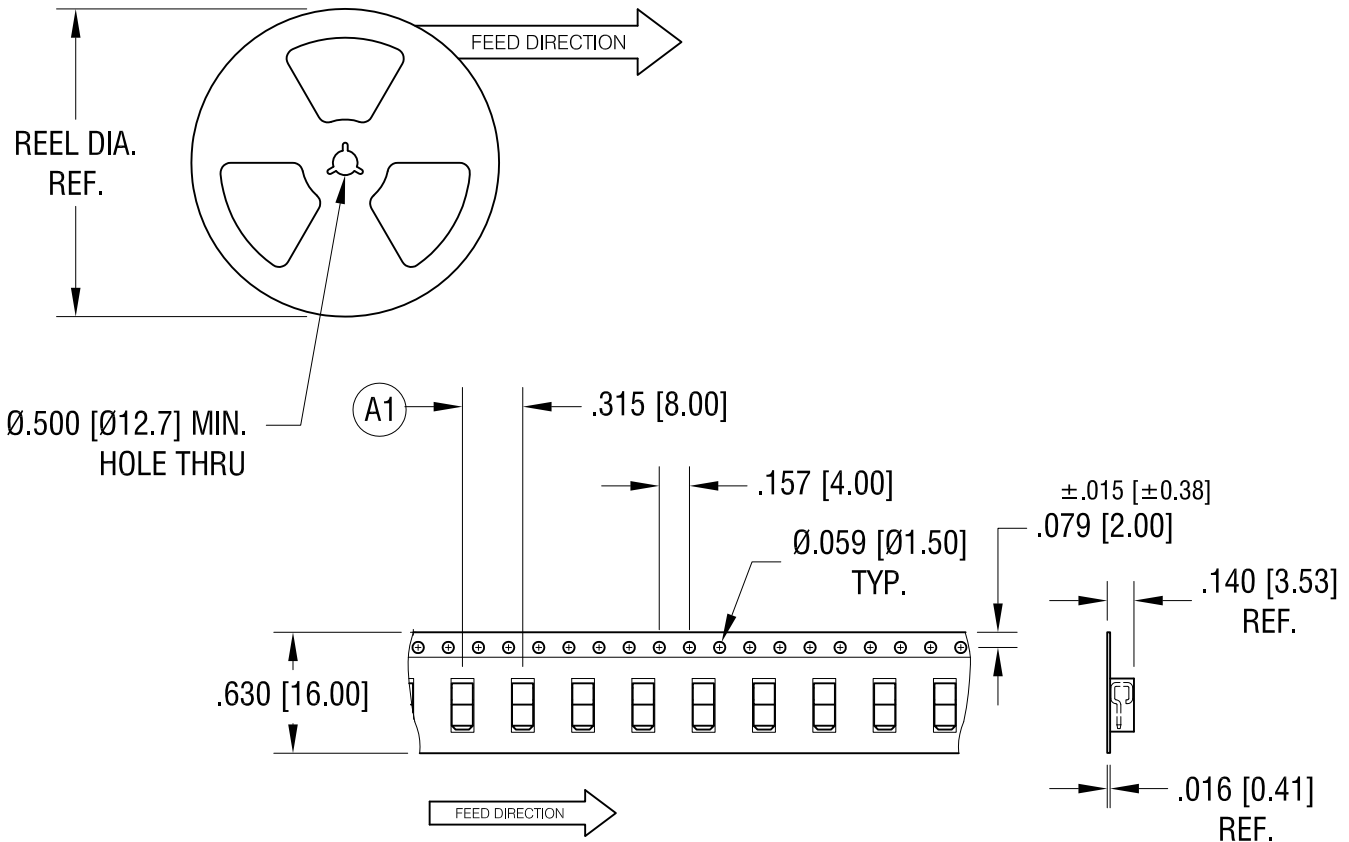


THIS DOCUMENT IS THE PROPERTY OF KEYSTONE ELECTRONICS CORP. AND SHALL NOT BE REPRODUCED, DISTRIBUTED OR USED AS A BASIS FOR MANUFACTURE WITHOUT PRIOR WRITTEN PERMISSION FROM KEYSTONE ELECTRONICS CORP.



NOTES:

1. SUPPLIED ON TAPE AND REEL ONLY.

TAPE AND REEL SPECIFICATIONS:

2. TAPE:

MAT'L - ALL CONDUCTIVE POLYSTYRENE CARRIER
ANSI/EIA-481 STANDARD

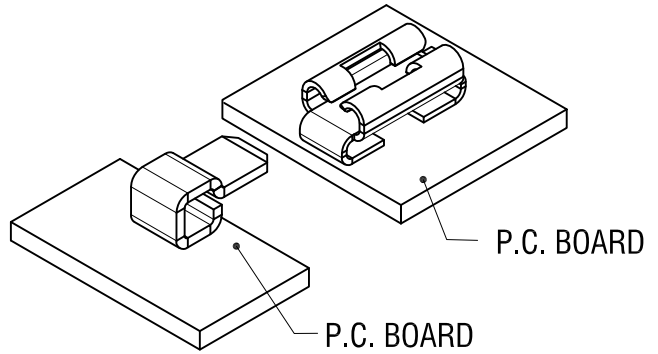
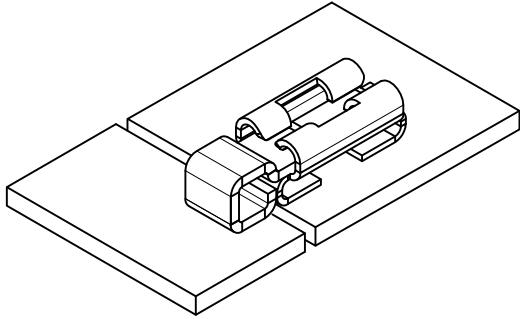
3. REEL:

13.00 [330.0] DIA. 1000 PIECES OF
P/N 3579 PER REEL

9.04.20	WAS 500 PCS PER REEL CHANGE AS PER ECN20-075	B
7.24.20	REEL DIA. WAS 7.0" PITCH (A1) WAS .157 [4.00] CHANGE AS PER ECN 20-068	A
DATE	DESCRIPTION	REV.

KEYSTONE ELECTRONICS CORP.			
www.keyelco.com • NEW HYDE PARK, NY 11040 • Tel (516) 328-7500			
PART NAME PARALLEL FITTING PIN ON TAPE AND REEL			
MATERIAL AS NOTED			
FINISH AS NOTED		DRN BY NT	DATE 3.08.19
		APP'D LN	SCALE X
TOLERANCES	INCH [MM]	CODE	DWG NO.
DECIMAL	± .005 [± 0.13]	C	3579TR
ANGULAR	± 1°	UNLESS OTHERWISE SPECIFIED	

THIS DOCUMENT IS THE PROPERTY OF KEYSTONE ELECTRONICS CORP. AND SHALL NOT BE REPRODUCED, DISTRIBUTED OR USED AS A BASIS FOR MANUFACTURE WITHOUT PRIOR WRITTEN PERMISSION FROM KEYSTONE ELECTRONICS CORP.

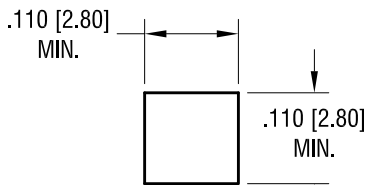
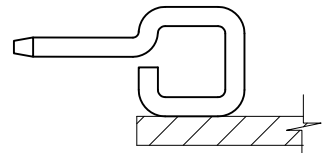
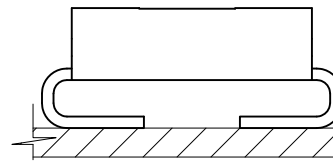
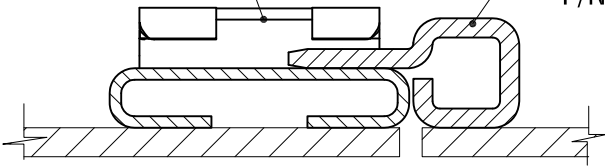


P.C. BOARD

P.C. BOARD

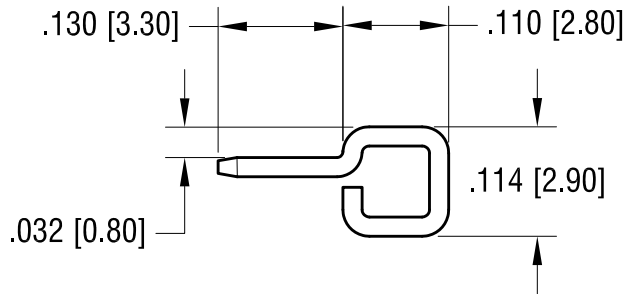
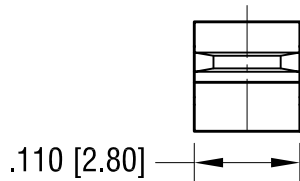
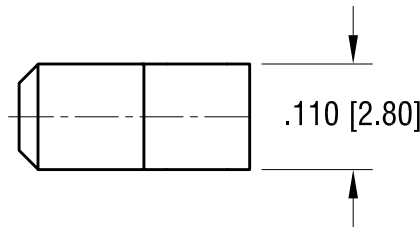
QUICK-FIT
P/N 3569

PIN
P/N 3579



MOUNTING PAD DETAIL

ACTUAL SIZE



KEYSTONE ELECTRONICS CORP.

www.keyelco.com • NEW HYDE PARK, NY 11040 • Tel (516) 328-7500

PART NAME
PARALLEL FITTING SM PIN

MATERIAL
.020 [0.50] TH'K BRASS

FINISH MATTE TIN PLATE	DRN BY NT	DATE 3.12.19
	APP'D RH	SCALE 5X

4.13.20 CHANGE AS PER ECN 20-037

A

TOLERANCES	INCH	[MM]	CODE
DECIMAL	$\pm .005$	$[\pm 0.13]$	C
ANGULAR	$\pm 1^\circ$		
UNLESS OTHERWISE SPECIFIED			

DRG NO.

3579

DATE	DESCRIPTION	REV.
------	-------------	------