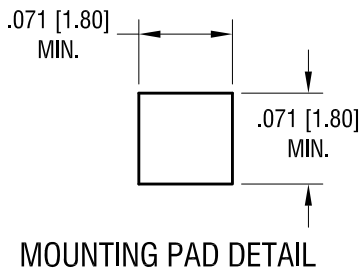
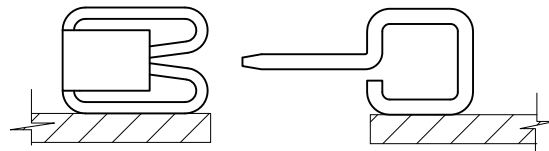
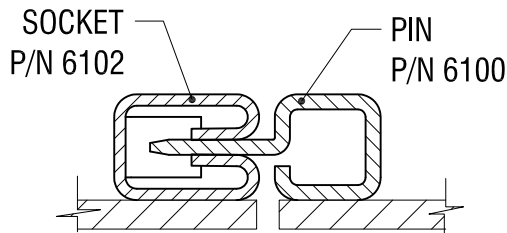
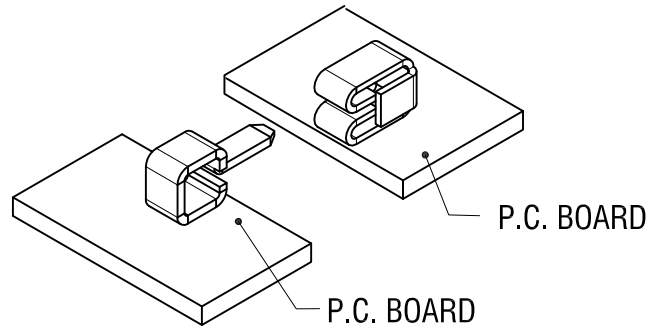
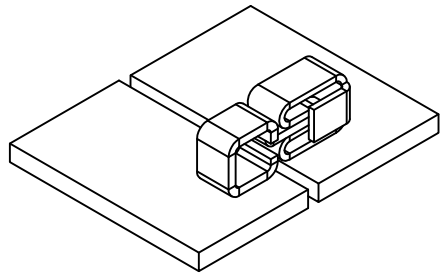
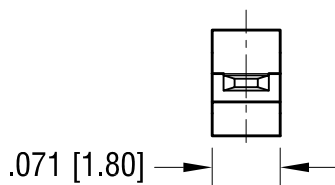
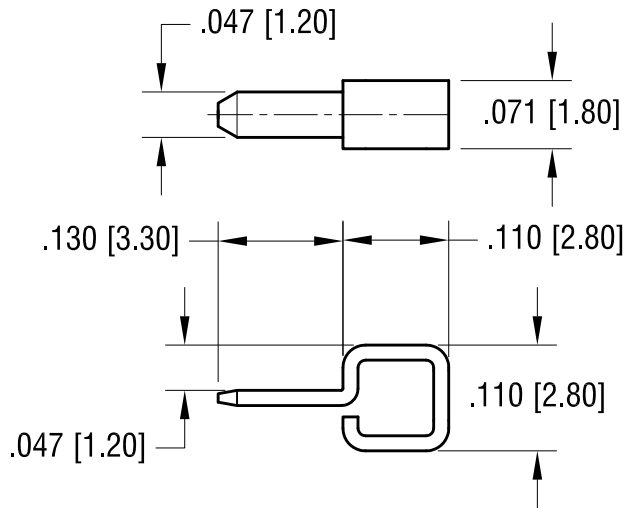


THIS DOCUMENT IS THE PROPERTY OF KEYSTONE ELECTRONICS CORP. AND SHALL NOT BE REPRODUCED, DISTRIBUTED OR USED AS A BASIS FOR MANUFACTURE WITHOUT PRIOR WRITTEN PERMISSION FROM KEYSTONE ELECTRONICS CORP.



ACTUAL SIZE



NOTE:

1. CURRENT RATING: 10A
2. CONTACT RESISTANCE: 20m Ω OR LESS
3. OPERATING TEMPERATURE: -40° TO +.125°C

KEYSTONE ELECTRONICS CORP.			
www.keyelco.com • NEW HYDE PARK, NY 11040 • Tel (516) 328-7500			
PART NAME		PARALLEL FITTING SM PIN	
MATERIAL		.016 [0.40] TH'K PHOSPHOR BRONZE	
FINISH	GOLD PLATE	DRN BY	NT
		DATE	3.04.19
		APP'D	RH
		SCALE	5X
TOLERANCES	INCH [MM]	CODE	DWG NO.
DECIMAL	± .005 [± 0.13]	C	6100
ANGULAR	± 1°		
UNLESS OTHERWISE SPECIFIED			

DATE	DESCRIPTION	REV.	
------	-------------	------	--